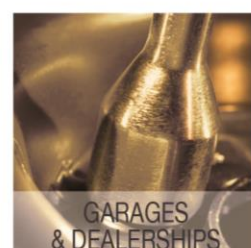
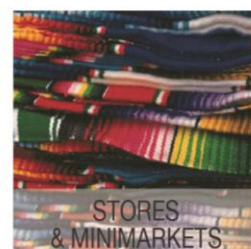
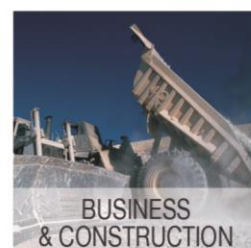
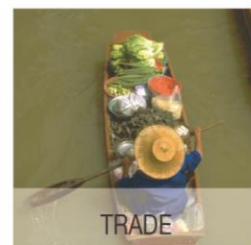


ACCOUNTING & BUDGET



Tél +33 (0)1 47 10 91 00
Fax +33 (0)1 47 41 99 37
Mail : infos@thalia-france.com

Management solutions

adapted to your enterprise ...

Thalia Informatique, founded in 1994, publishes comprehensive and fully customisable business management software. Our software conforms to current industry standards, and merges seamlessly into your organization, integrating with your existing IT system. Our product range is database-driven and constantly upgraded.



Contact in France

79, bd de la République
92430 Marnes la Coquette
France

✉ infos@thalia-france.com

🌐 www.thalia-france.com

☎ 33 1 47 10 91 00

☎ 33 1 47 41 99 37

Training certify.11921755992

Thalia Affiliates

Thalia Caraïbes - Guadeloupe
Thalia Afrique - Sénégal

French Partners

Hpcc - Mayotte Island

African Partners

Aforis - Gabon
Briya Technologies - Burkina
Casc - Tchad
Gabontech - Gabon
It - Guinée Conakry
Its - Congo
Nsi - Cameroun
Tici/Iss - Côte d'Ivoire
Liptinfor - Niger
Orioncom - Rép. du Congo
Pil - Togo
Satlx - Mali
Soyere Consulting - Sénégal

An evolving solution

Constantly evolving in response to the needs of its users (new modules, updated functionality, more user-friendly interfaces), our products suit the market ever more faithfully.

Matched set

The Thalia product range includes :

- Thalia Gescom & Thalia TPV
- Thalia Compta & Thalia Xcoa
- Thalia Immos
- Thalia Paye & Thalia Temps
- Thalia Caisse

Dependable technology

Our product range is founded on SQL databases. A technology that offers more power to your data management, more integrity to your data and better communication between applications.

Partnership network

Our product range is distributed throughout France and overseas via trained partners. All partners are fully capable of managing installations.

Expert training

Your personnel are trained on your premises by our expert partners or our training team.

Real-time help

Our help line, answered by a professional service agent, is always open. Contact us by telephone, fax, e-mail or telemaintenance.

Our ftp site is also at your disposal for downloading our software utilities.

Guaranteed results

We work with you to define your needs, and compile a dossier which serves as a reference for validating the eventual system.

Internet service

On our internet sites, www.satti-france.com and www.thalia-france.com, you'll have access to our commercial documentation and our versioning history.



...des applications réelles

General accounting

- Customized entry
- Day book parametering
- Input status
- Lettering
- Clocking
- Validation
- Grouping
- Fixed assets



Budget/Cost accounting

- Budget / account
- Budget / reporting
- Budget / section
- Revision
- Amount and rates
- Free status
- Comparatives



Reporting

- Reporting accounts
- Associated accounts
- Management status
- Regroupments
- Analyses



Consolidation

- Detailed consolidation
- Aggregated consolidation
- Free consolidation
- Assoc. accounts
- Consolidated cur.
- Aggregated stat.



Contents

Page 4	Thalia Compta
Pages 5 & 6	Accounting data
Pages 7 & 8	Accounting processing
Page 9 & 10	Advanced functions
Pages 11	Accounting editions
Pages 12 & 13	Budget & Fixed assets
Pages 14	Sample reports
Page 15	Technical tools Thalia

Major references

Getma Group (financial accounting with 5 analytic axes and regroupment) - **Michelin Export** (financial accounting with analytics by product line and reporting) - **Soguipah Guinea** (complete accounting with analytics)

Hitachi Software (hi-tech communication equipment) - **Union Postale Universelle** - **Electricité de Mayotte** Saur group (analytic accounting) - **Rti Reamet** (aeronautical parts) - **Bauche** (sugar trade) - etc

THALIA COMPTA

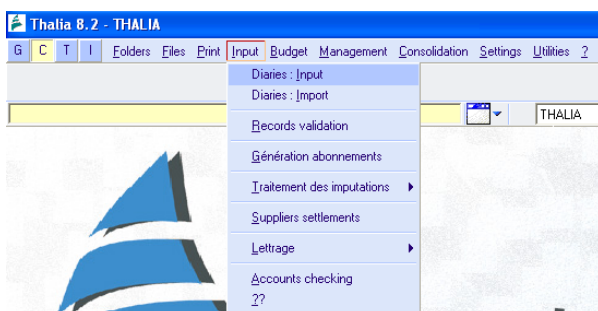
Thalia Compta uses simple, comprehensive principles for financial, cost or budgetary accounting data input, allowing for rapid account monitoring and management auditing.

Input made easy...

First of all, **Thalia-Compta** is easy to use. Its clear menus provide quick access to the information you need. When using an account record, you can go from balance to history, and even to input with a simple click of the mouse. The screens are clear, detailed and, most importantly, customizable. Multi-windowing allows several tasks to be performed simultaneously and the menus provide quick access to all the accounting functions.

...And efficient

Thalia-Compta has powerful functions that allow the data to be managed quickly: multiple input modes (real, day book and simulated), assisted input (input assistants, part models, subscription entries), real-time updating of information, account and diary history for the current financial year as well as closed financial years, matching and analytic breakdown of input in progress over 9 possible axes, capture of simulation entries to create intermediate situations...

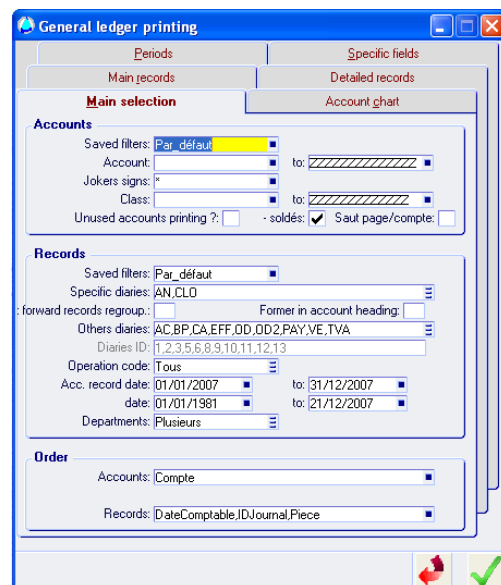


Daily input is particularly user-friendly, allowing training to be done very quickly.

Input and selection screens may be optimized according to desired data.

Search functions

Searches for entries may be done using multiple criteria (diary, account, dates, amount, lettering, clocking, joker signs...)



Main functions

- Financial accounting
- Cost accounting (9 axes with levels)
- Budgetary accounting with revision
- Third party management
- Bank lettering and clocking
- Reporting (2 available plans)
- Consolidation and merger
- VAT declaration including encashment
- Closing for period
- Closing financial year (provisional and final)
- Summary statements
- Fixed asset management
- Multicurrency management with exchange differential
- Translation module
- Capability list management
- and many other additional functions.

ACCOUNTING DATA AND INPUT SETTINGS

Thalia-Compta offers simple, efficient methods for daily data input in financial accounting.

Accounts chart

Access to information is simple and easy using the account management window. By clicking on one of the tabs, you can instantly consult an account balance or display the month's activity history. For third party accounts, additional information can be added in the associated record.

The account record includes:

- Account, description and alpha key
- Regroupment key to edit several accounts under the same "key"
- Reporting accounts
- Link with commercial management
- Closing/reopening options
- Nature of the account
- Blocking option
- Quantity entry option
- Sense and VAT options
- Utilization profile
- Printing profile
- Analytic breakdown axis with breakdown input and regroupment settings
- Additional selection criteria

The file contains a pre-saveable **filter** management to be re-used in quick display or in a report.

Classes of accounts

Accounts are regrouped under the classes whose base parameters can be transferred to the related accounts following each modification.

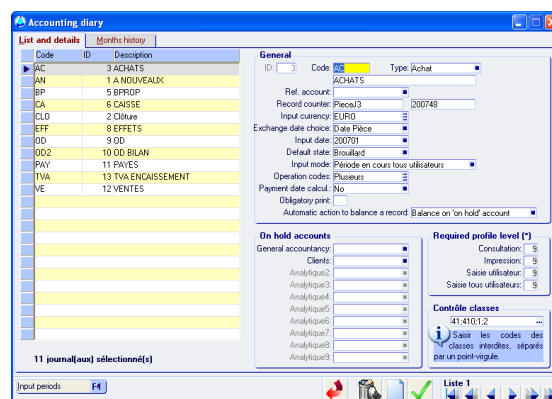
The majority of the account parameters are therefore found in the class parameters. This class/account link simplifies the implementation of the chart and all subsequent modifications.

When creating a report, it is also possible to select the classes to be included.

ACCOUNTING DATA AND INPUT SETTINGS

Diary management

The diaries integrate basic input and input assistance settings as well as monthly history information. Here, you can set management settings for part numbers, contra accounts, on hold accounts, input modes and many principles to facilitate daily use.



Input modes

Thalia-Compta has 4 different input modes

- **Gateway:** by default for entries imported into the accounting system
- **Day book:** by default for temporary entries
- **Simulated:** by default for projected entries
- **Accounting:** for final entries.

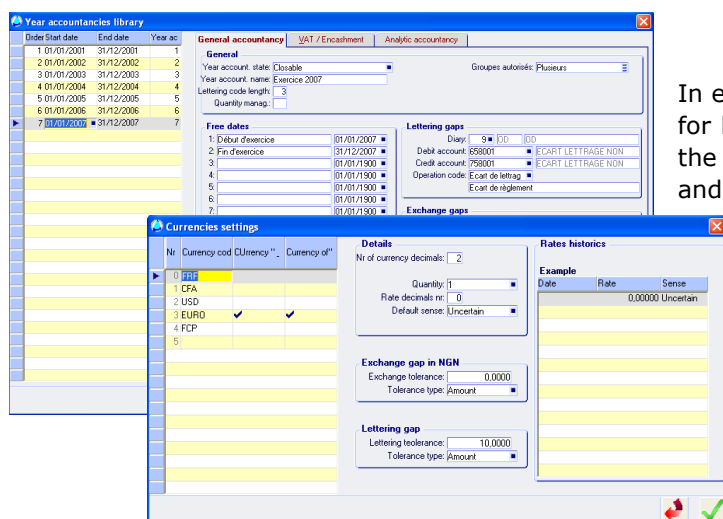
The first 3 modes can be used as a hierarchy, as the system facilitates moving from one status to another, with the final "Accounting" status corresponding to the final validation of the part.

As each input mode can be combined with another, you can then integrate all or part of the entries in the screens and reports according to their position under accounting with a simple click.

Input assistance further facilitates the use of the input modes.

Financial years and currencies

Thalia-Compta allows several financial years to be managed at the same time, with the system allowing the user to move quickly from one financial year to another.



In each financial year, you can indicate the settings for lettering gaps and exchange gaps (according to the currency table) as well as the major closing and reopening settings.

The opening of a new financial year depends on the status of the previous year (in this case, it must be "closable").

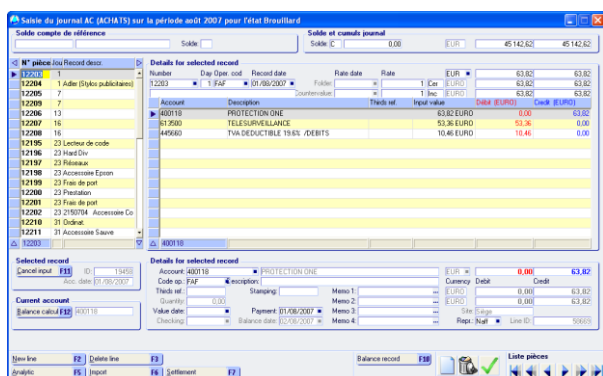
INPUT AND PROCESSING

Thalia-Compta is parametered so as to allow rapid input and efficient monitoring. All the daily functions are found in the same menu.

Input methods

Input in **Thalia-Compta** can be entered using two methods : "normal" and "fast." A new part opens for general information about the part to be entered in the header.

The details of each line can be entered at the bottom of the screen. The description of the part can be completed by the line description. The information to be entered is controlled according to the parameters (like the analyses on each axis or the contra accounts)



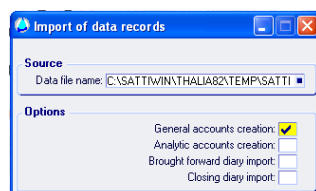
All the parts that have been entered but not yet validated in "Accounting" mode can be modified. Lines can be added to the entry, parts can be cancelled or the analytics assignments can be changed. Parts are listed at the left of the screen.

Input can also be made automatically in Thalia-Compta for subscriptions or to import input from another diary.

Importing input

Many softwares are interfaced with other applications (commercial management, payroll, etc.) Input can be imported automatically with or without the creation of accounts.

When the applications are from the Thalia line, the interfaces are automatic.



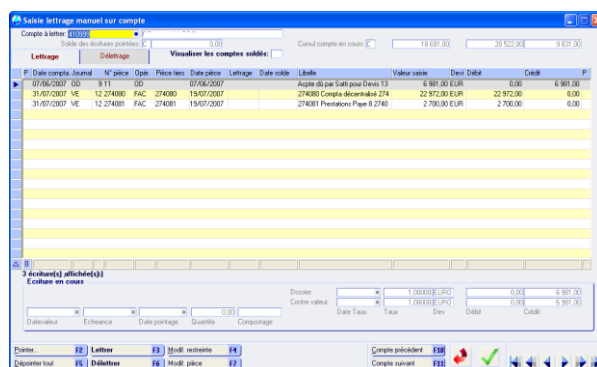
Lettering

Lettering can be done in 4 possible methods:

- Automatic lettering: entries can be reconciled according to part n° and amount.
- Manual lettering: may offer a Diverse Operation according to parameterable tolerance settings, as well as partial lettering.
- Lettering during entry: allows a part to be lettered during the entry of a payment,
- Lettering with account statement: allows an account statement to be generated.

The entries' lettering and clocking dates are saved so that you can produce a lettering status at a given date (such as that of a balance receipt.)

The unlettering tab allows the user to resume lettered entries and to rapidly view entries that have previously been lettered.



Clocking

Accounts are clocked according to the same processing principle as lettering, with the user able to view unclocked and clocked entries.

The system saves the statement history and the balance being entered in order to allow the clocking to be constantly monitored.

INPUT AND PROCESSING

VAT management

Thalia-Compta manages VAT declarations both upon delivery and on receipt of payment.

The accounts which will be used to process the different types of VAT on delivery of goods, and on receipt of payment, are set in the parameters.

The software manages the VAT on delivery of goods, on receipt of payment, as well as a mixed mode.

The monthly or quarterly declarations are made using the "Management" menu.

Supplier payments

Thalia-Compta lets the user choose the supplier accounts and the parts to be paid for by using a selection screen. Entry and lettering are done automatically upon validation.

Letters of payment for suppliers as well as voucher checks can be produced at the same time.

Input validation

Once the entries are "final" (this choice depends on each accounting department's organisation), they can be validated, which means they can no longer be modified.

When creating a report, the user can choose to select only those entries that have been validated.

Third-party record

In **Thalia-Compta**, the user can enter a complete, parameterable third-party record which can contain the following information:

- Name and complete identification
- Associated representative
- 10 single open criteria
- 5 multiple open criteria
- Multiple contact people and their information
- Associated payment record and bank information
- Revenue over a period of 3 years
- ... and many additional variables (or areas) which can be parametered by the user.

ADVANCED FUNCTIONS

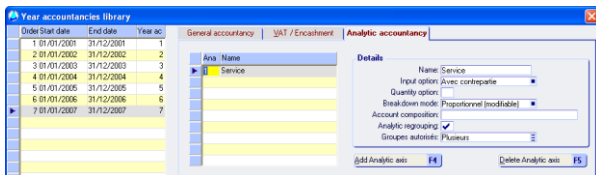
According to your accounting needs and project specifications, you may need to use advanced functions or complementary modules in order to provide a more complete analysis. The functions available depending on licences integrate perfectly into financial accounting.

Cost Accounting

Thalia-Compta offers multi-axis analytic management (up to 9 possible axes) with levels (a structure can be defined for the sections).

For each axis, the **sections can be freely defined or defined with a specific structure**. In this case, a section could be composed of a Construction site and a Team. Upon entry, the construction site and the team are chosen, and this makes up the entire section, as the construction sites and the teams will have been defined beforehand in the spreadsheets.

Structured sections make it possible to avoid entry errors, as well as to produce summaries such as our example, by team, by construction site, or by complete section.

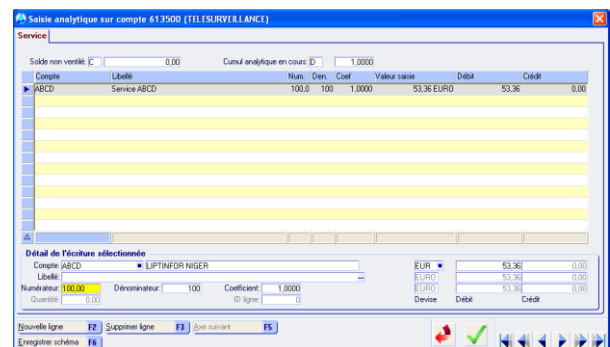


Classes and/or accounts can be parametered to:

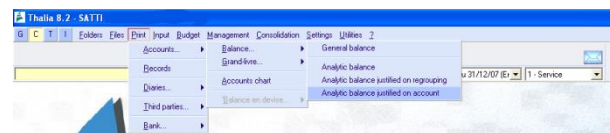
- Require analytic entry on 1 or several axes. Users will be required to choose the analytic sections to be broken down,

- Authorise a list of files or sections on one or part of the financial accounts to be broken down analytically,
- Perform free or proportional allocation,
- Perform quantity as well as amount analysis,
- Work with regroupments on financial accounts. This allows an analytic "nature" to be added transparently to each financial account, as well as for entries to be broken down by section and nature.

The entry of analytic lines is controlled according to the parameters.



The breakdowns are available when entries are added under financial accounting and may also be modified in the diaries, or switch over to pure cost accounting.



The analytic statements are complete and modifiable (comparative of periods, progress of construction sites, cross analysis of sections according to their structure, etc).

Consolidation

The software makes it possible to have several accounting files simultaneously.

The Consolidation function allows 2 or more files to be brought together into a single file in order to get a consolidated balance and the balance sheet or the consolidated profit and all the data brought together in the statements.

The system also includes a simple option to produce a consolidated version of the files without performing an actual consolidation of the data.

MODULES COMPLEMENTAIRES

Reporting

Reporting accounts can be added to financial accounts in order to read the accounts according to a second (or a third) account chart. This simple reporting function allows for the creation of all types of accounting summaries which are within the reach of standard users.

Service	Intérêts analytiques
C001	Charges frais fixes hors communication
C002	Charges fixes communication
C003	Charges financières
C004	Charges impôts et taxes
C005	Charges salaires
C006	Charges sociales
C007	Charges sous traitance
C008	Charges hors exploitation
V001	Ventes logiciels Thalia
V002	Ventes maintenance
V003	Ventes prestations

Standard displays are then available to print out reporting accounts as well as financial accounts.

Regroupments

This possibility allows accounts to be viewed regrouped according to senses or D/C columns. Using this system, it is possible to assign roots, accounts or totals to each regroupment code by simply using a formula.

ID	Code	Description
63	R_HE	Charges exceptionnelles sur opé
64	R_HF	Charges exceptionnelles sur opé
65	R_HG	Dotations exceptionnelles aux am
66	R_HH	TOTAL DES CHARGES EXCEP
173	R_HI	RESULTAT EXCEPTIONNEL (M
67	R_HJ	Participation des salariés
68	R_HK	Impôts sur les bénéfices
174	R_HL	TOTAL DES PRODUITS (M+V+V
69	R_HM	TOTAL DES CHARGES (M+V+V
175	R_HN	BENEFICE OU PERTE
191	TVA_01	Vente HT TVA/Débit
196	TVA_011	Vente HT TVA/Encaissement
192	TVA_03	Acquisition HT CEE
193	TVA_04	Export HT Hors CEE
194	TVA_06	Vente HT CEE
195	TVA_07	Achat HT Hors CEE
35	V_AA	Vent TVA 6°1
36	V_AB	Vent TVA 6°5
37	V_AC	Charges fixes pour Budget
0		

Multiple currencies

Thalia-Compta is a multiple currency accounting system. The currencies used are set with the definite or non-definite exchange rates. A fixing table is kept to keep up with fluctuations in exchange rates.

Nr	Currency code	Currency	Currency of
0	FRF		
1	CFA		
2	USD		
3	EUR		
4	FCP		
5			

When entering a part, its currency is selected and the conversion is done automatically.

Rate date	Rate	CFA	EUR
01/01/2001	0.00152449	120 000	120 000
01/08/2007	1.40000000	182,94	182,94
		256,11	256,12

For payments, the payment difference accounts can be defined along with the desired tolerance.

The system also allows a counter value currency to be managed so that the accounts can be read in another currency than that of the file.

Inter-site

The Inter-site module is intended to allow data to be entered from remote locations and then imported to the head office.

This function is useful for all companies that have several geographically distant locations.

The system monitors:

- Shared account charts,
- The modification of input in agencies,
- The deletion of input in agencies,

There is an option to retransfer input that has already been transferred.

ACCOUNTING REPORTS

Bringing information together is very important in an accounting system. The output menus allow the user to select a large number of criteria and to preview in order to facilitate searches.

List of standard reports

The standard version includes many types of reports:

- Single and multi-period general balance
- Detailed diaries
- General Journal
- Cost/Nominal Ledger
- Account chart

- Follow-up letters with levels
- Payment schedule
- Aged balance
- Statement to date
- Letter of payment for suppliers

- Reconciliation status
- Banking

- Cost balance
- Cost balance by regroupement
- Cost balance by account

Comptes associés	Compte début	Compte fin
Plan comptable associé 1		
Plan comptable associé 2		

The report generator allows as many reports to be added as necessary, particularly management and analysis reports.

In the selection screen, all the entered data can be selected (several tabs) to perform simple searches.

Complements for reports

For each user's different needs in terms of management reports, the database processing allows:

- The classification of the data in a report according to a criterion chosen by the user. This particularly important function allows for a large amount of freedom in sorting.

- Reuse of previously saved filters

- Free summaries at the foot of the spreadsheets.

- The creation of ASCII files for export to other softwares (financial reports, accounts) or direct interface with Excel

Date Management

For several types of reports, it may be necessary to use beginning and ending dates corresponding to a financial year (such as in quarterly processing). In Thalio-Compta, beginning and ending dates can be set for each financial year and used regularly in multi-period reports.

The major application may be in profit tables with one column for monthly profits and one column for total profits since the beginning of the financial year.

Free dates		
1:	Début d'exercice	01/01/2007
2:	Fin d'exercice	31/12/2007
3:		01/01/1900
4:		01/01/1900
5:		01/01/1900
6:		01/01/1900
7:		01/01/1900
8:		01/01/1900
9:		01/01/1900
10:		01/01/1900
11:		01/01/1900
12:		01/01/1900
13:		01/01/1900
14:		01/01/1900
15:		01/01/1900
16:		01/01/1900
17:		01/01/1900
18:		01/01/1900
19:		01/01/1900
20:		01/01/1900

BUDGET MANAGEMENT

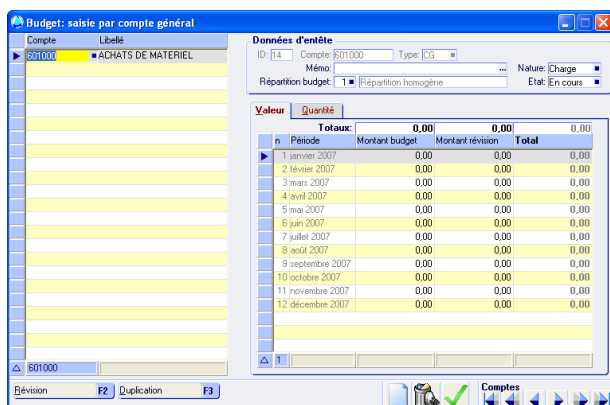
Budget is a complementary function to accountancy. There are many applications and the analyses can be performed on financial accounting, cost accounting, or the reporting charts.

Budget by financial account

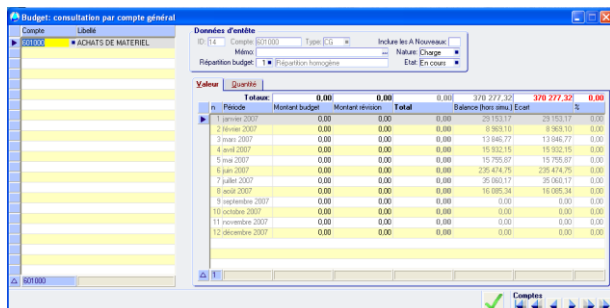
Thalia-Compta integrates budget management based on revisable forecasts and figures entered on budgetary items:

- Budget by account
- Budget by reporting
- Analytic budget (account or regroupment)

This system allows for budgets to be transferred from one financial year to the next. The budgets set are revisable. For each budget item, the user can view profits onscreen as balances. It is possible to produce all types of reports.



The budget can be parametered by period with or without a distribution key. The system allows current-year budgets to be **duplicated** during creation and to be **revised**.



When consulting the budget, the user views:

- The budget
- The revision of the budget
- The budget total
- The actual account balance
- The difference in value and in percentage

Budget by reporting

In Thalia Compta, the budget can also be processed on reporting charts (from 1 to 9). This most importantly allows analyses to be condensed to focus on the major expenditure and product items.

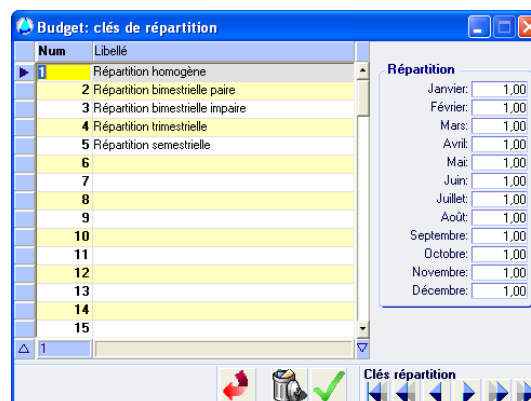
Budget by analytic section

The budget may also be applied against the analytic sections (single or by levels). This approach can be directly applied in the management of budgeted projects or construction sites.

Input and distribution keys

The budget can be entered in 3 modes:

- Free entry: The amounts are freely entered by period. The system calculates the total in the header.
- Entry by set distribution: a distribution key is chosen from a pre-defined list (monthly distribution, bimonthly distribution, etc.), the budget total is entered and the system performs the distribution.
- Free-key entry: the user defines his own keys according to the "weight" of each period in the free keys. The total amount is entered and the system performs the distribution according to the chosen key.



FIXED-ASSET MANAGEMENT

As an independent model or integrated into accountancy to make up a real ERP, fixed-asset management provides all the answers on goods, their management and their history.

Goods

In the product record, the user will find:

- Complete identification on the product good (type, nature, bar code, origin, location, set and open description)
- 10 free distribution criteria
- Supplier invoice data with the option to factor in the business tax
- Amortisation profile with different modes (linear, degressive, special and exceptional)
- State of the product (active, amortised, transferred, sold, etc.)

Saisie des biens

Code: S0001 Libellé: Moquette bureau Statut: 3

Description: Code: S0001 Libellé: Moquette bureau

Type: Bilan mis en service Nature: Coposelle Origine: Acquisition Localisation: Lieu 1

Critères libres: Critère libre 1: Indéfini Critère libre 2: Indéfini Critère libre 3: Indéfini Critère libre 4: Indéfini Critère libre 5: Indéfini Critère libre 6: Indéfini Critère libre 7: Indéfini Critère libre 8: Indéfini Critère libre 9: Indéfini Critère libre 10: Indéfini

Facture: Fournisseur: CYP N° de facture: 34572/1 Date de facture: 30/04/1992 N° de pièce: 1397 Montant HT: 1 893,29 TVA: 0,00 Quantité: 1,00 N° de lot:

Divers: Bien soumis à tare professionnelle: ☒ sur la base de: 100,00

The customization of the entry screens and the possibilities offered by the SQL databases also make it possible to provide all types of solutions to fixed asset management problems.

Comptabilisation

Profil d'amortissement: 1 F01 Linéaire 5 ans

Date début d'amortissement: 30/04/1992

Suffixe de compte général:

Préfixe de compte analytique:

Passage en comptabilité: ☒

Amortissement dérogatoire: ☐

Calcul comptable

Méthode de calcul: Linéaire

Base de calcul: 1 893,29

Cumul des réévaluations: 0,00

Valeur - amortie: 1 893,29 - restante: 0,00

Nombre de mois - total: 60 - amortis: 60 - restants: 0

Coefficient: 0,00

ID de la grille: 0

Calcul fiscal

Méthode de calcul: Linéaire

Base de calcul: 1 893,29

Cumul des réévaluations: 0,00

Valeur - amortie: 1 893,29 - restante: 0,00

Nombre de mois - total: 60 - amortis: 60 - restants: 0

Coefficient: 0,00

ID de la grille: 0

Fixed-asset management

The management functions naturally allow for a comprehensive processing of fixed assets:

- Management of the transfer of allocations to accountancy
- Accounting and fiscal management of amortisations
- Management of annual or monthly allocations
- Possible re-evaluation of NBVs according to fiscal rules
- Transfer of goods with product calculations
- Division of goods
- Amortisation journal

Thalia 8.2 - SATTI

G C T I Dossiers Fichiers Impression Travaux Paramètres Utilitaires ?

Journal d'amortissement et cession

Réévaluation des biens

Division des biens

The "amortisation history" and the "complete simulation" tabs provide the user with a readable way to monitor his goods.

Historique

Période	Dot. comptable	Reval. comptable	Dot. fiscale	Reval. fiscale
199212	283,99	0,00	283,99	0,00
199312	378,66	0,00	378,66	0,00
199412	378,66	0,00	378,66	0,00
199512	378,66	0,00	378,66	0,00
199612	378,66	0,00	378,66	0,00
199712	94,66	0,00	94,66	0,00

THALIA TECHNICAL TOOLS

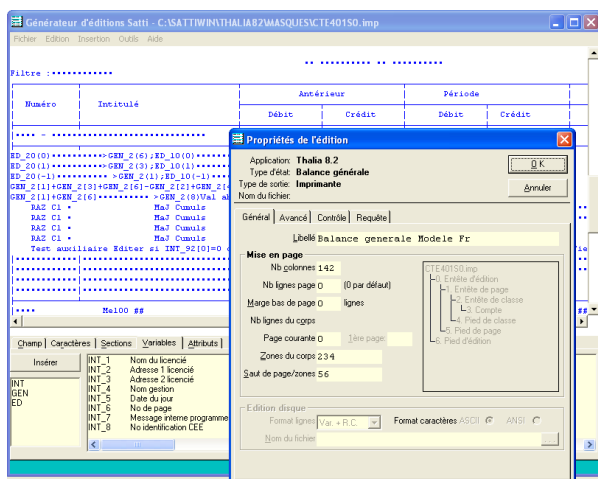
Thalia Compta comes with input screen and report customization tools. Our "turnkey" service includes preparation according to your requirements for an actual and immediate launch.

Report generator

All data accessed by the application is displayable in the form of completely customisable publications.

Users generally need rapid access to data summaries (sales, purchases or inventory). The format of these documents depends on their purpose and on available templates. Information may be formatted as .pdf or text, interchanged with collaborators, by e-mail, by fax or even with other applications (accounting packages, for example).

Thalia Gescom embodies a full-featured statement generator, equally capable in terms of content and style. Using the power of SQL statements, the utility of this tool is essentially unlimited.



Any kind of summary table may be assembled. Control panels and report generation can cover every business activity.

Screen generator

All data entry and selection screens are customisable and may be modified without any programming. For example, you may :

- Modify the display of the client, supplier or product data records – eliminating unneeded data and adding your own data fields.
- For ease of data manipulation when creating publications, you can filter the selection criteria and save your own selection mask.

Display screens can also contain conditional fields, entry and display prohibition, calculation formulae, free-form fields (text, numerical, memo, date...).

Data may also be displayed differently according to user permissions.

Security, profiles and access

On a network, **Thalia-Compta** allows several users to work simultaneously and comes with a profile management by user group and/or user. The system allows for the management of access to:

- Accounting files
- Menus
- Functions
- Diaries and accounts thanks to the "levels"

In this way, access to certain functionalities will be granted or denied according to who is using the software. Each group and/or user has his own password.

SQL Explorer and free tables

An ancillary database search tool is a standard part of the application. The utility is reserved for administrators and has many useful features.

Finally, the data structure allows for the addition of free-form data tables in addition to those installed as standard.

THALIA INFORMATIQUE
79, boulevard de la République
92430 MARNES LA COQUETTE - FRANCE

Phone
33 1 47 10 91 00

Fax
33 1 47 41 99 37

Mail
infos@thalia-france.com

Web
www.thalia-france.com