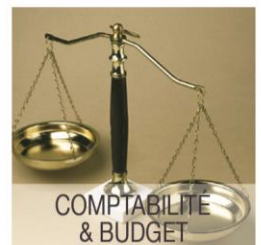
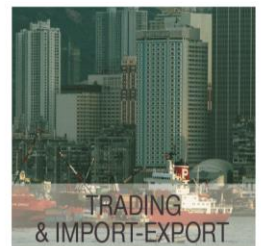
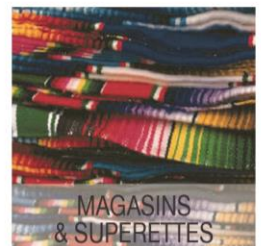


# PHARMACIE



THALIA  
INFORMATIQUE

Tel +33 1 47 10 91 00  
FAX +33 1 47 41 99 37  
E-mail : [infos@thalia-france.com](mailto:infos@thalia-france.com)

# Management solutions

## adapted to your enterprise ...

Thalia Informatique, founded in 1994, publishes comprehensive and fully customisable business management software. Our software conforms to current industry standards, and merges seamlessly into your organization, integrating with your existing IT system. Our product range is database-driven and constantly upgraded.



### Contact in France

79, bd de la République  
92430 Marnes la Coquette  
France

✉ [infos@thalia-france.com](mailto:infos@thalia-france.com)

🌐 [www.thalia-france.com](http://www.thalia-france.com)

☎ +33 1 47 10 91 00

☎ +33 1 47 41 99 37

Training cert. 11921755992

### Thalia Affiliates

Thalia Caraïbes - Guadeloupe

Thalia Afrique - Senegal

### French Partners

Hpcc - Mayotte Island

### African Partners

Aforis – Gabon

Briya Technologies – Burkina

Casc - Chad

Gabontech – Gabon

It – Guinea Conakry

Its - Congo

Nsi – Cameroon

Tici/Iss – Ivory Coast

Liptinfor - Niger

Orioncom - Rep. of Congo

Pil - Togo

Satlx - Mali

Soyere Consulting - Senegal

### An evolving solution

Constantly evolving in response to the needs of its users (new modules, updated functionality, more user-friendly interfaces), our products suit the market ever more faithfully.

### Matched set

The Thalia product range includes :

- Thalia Gescom & Thalia TPV
- Thalia Compta & Thalia Xcoa
- Thalia Immos
- Thalia Paye & Thalia Temps
- Thalia Caisse

### Dependable technology

Our product range is founded on SQL databases. A technology that offers more power to your data management, more integrity to your data and better communication between applications.

### Partnership network

Our product range is distributed throughout France and overseas via trained partners. All partners are fully capable of managing installations.

### Expert training

Your personnel are trained on your premises by our expert partners or our training team.

### Real-time help

Our help line, answered by a professional service agent, is always open. Contact us by telephone, fax, e-mail or telemaintenance.

Our ftp site is also at your disposal for downloading our software utilities.

### Guaranteed results

We work with you to define your needs, and compile a dossier which serves as a reference for validating the eventual system.

### Internet service

On our internet sites, [www.satti-france.com](http://www.satti-france.com) and [www.thalia-france.com](http://www.thalia-france.com), you'll have access to our commercial documentation and our versioning history.



# ...practical applications

## Features of the Thalia "Pharmacy" module

Computerisation of a pharmacy within the (African) SYSCOA or OHADA accounting zones differs from the process for a European establishment. Local practices must be taken into account, such as:

- Periodic invoicing either to the client's commercial account or to its firm,
- Very close monitoring of company regulations,
- No automatic interface to social security and health benefits data systems.



## "Key points" for your information systems

Info systems for a pharmacy, just as for any other shop, must address certain "key" requirements:



- Precision stock management,
- Rapid access to all data, with maximum automation of checkout,
- Data lookup, including detail of batched pharmaceutical supplies,
- Liaison with external applications such as purchasing or accounting systems.

### Contents

Page 4	Gescom in the pharmacy
Page 5	Stock, clients & sales
Pages 6 & 7	Detailed functions
Page 8	Purchasing
Page 9	Checkout accessories
Pages 10 & 11	Example screens
Pages 12 & 13	Thalia technical tools

# THALIA GESCOM EN PHARMACIE

Thalia Gescom is capable of automating all pharmacy management functions. It operates either on standard (Windows) computers, or on more specialised "Cash" systems.

## Pharmacy sales

Thalia-Gescom controls sales using cash register tickets or "mini-invoices". Depending on your needs, supplementary functions, such as client ordering or purchasing, may be integrated. It is especially well suited to **point-of-sale (POS) terminal** data systems.

Thalia-Gescom easily accepts input from accessories such as digital cash register drawers, displays, ticket and/or cheque printers, and all types of mobile scanning wands or optical scanners.

## Simple and speedy invoicing

Designed as simple invoicing software, the system allows customisation of all pharmacy screen displays -- article, client and invoice.

Code	Désignation	Quantité	Taille	Couleur	PU	%	Montant
IGDPCOU343041	PTCOURT COTON 343 T 41	1			115,00	0,0	115,00
					0,00	0,0	0,00

The daily summary is particularly user-friendly, making training very efficient and quick.

## Interface with wholesalers

The **inter-sites** module oversees all outlets in your group, connected to a central terminal with automatic update of codes and prices.

The merchandise database is normally controlled at the central terminal, and the transactions at every shop are copied to this central site.

## Sales and purchasing stats

The **statistics** module calculates and displays, in real time, all monthly sales and purchase data item by item, client by client, and supplier by supplier.

	CA	Marge	Taux Marge	Evol.Mrg/1
<b>Stats mensuelles</b>				
2004	13 977,14	2 799,61	25,05	401,08
janvier 2004	6892,70	558,72	8,11	-71,36
décembre 2003	16542,12	1951,11	11,79	-50,64
novembre 2003	11588,40	3953,06	34,11	83,42
octobre 2003	30682,60	2155,14	7,02	631,67
septembre 2003	3285,50	294,55	8,97	223,93
août 2003	734,40	90,33	12,38	-93,48
juillet 2003	37980,30	17386,17	45,78	3973,23
juin 2003	3383,10	426,84	12,62	-86,14
mai 2003	7214,60	3080,50	42,70	569,98
avril 2003	2632,24	459,79	17,47	-62,05
mars 2003	5073,27	1211,55	23,88	50,90
février 2003	3871,97	802,89	20,74	80,47
<b>Stats annuelles</b>				
Cumul année	6892,70	558,72	8,11	-98,27
Année A-1	124024,10	32257,43	26,01	181,48
Année A-2	57789,89	11459,78	19,83	171,82
Année A-3	32232,18	4215,97	13,08	-74,39

## Batch tracking

Pharmaceuticals batches are coded, and must be tracked closely.

Thanks to Thalia-Gescom's system of product identification at entry to, and exit from, stock, the complete history of any given batch or batch group may be displayed and examined.

Traçage des lots		
N° d'affaire:	N° de série:	N° de sommier:
De: [ ]	De: [X]	De: [ ]
à: [ ]	à: [ ]	à: [ ]

Sélection articles	
Activer la sélection:	[ ]
De:	[ ]
à:	[ ]

# STOCK, CLIENTS & VENTES

Thalia-Gescom is built around three main data structures: products, clients/suppliers and sales/purchases.

## Products and codes

A product data record includes :

- Internal code, Standard pharmaceutical code, Memo code...
- Product designation and packaging
- Replacement code or equivalent
- Sale price (5 possible prices) with auto-update if needed
- Sort criteria, tabulation, low-stock alert level, stock maximum, back-ordering, supply restrictions...
- Supplier record
- ... and many other variables (or zones) customisable by user.

Note: Products used only as samples may not have associated data records.

## Clients, suppliers and inventory

Either manual or global data update, with:

- Name, number, street address and postcode of the account,
- 10 simple criteria plus five multiple free-form criteria,
- Statistics, regulations and defaults,
- ... and many other variables (or zones) customisable by user.

## Invoices and cash register tickets

The invoice data file may also be customised according to the needs of each outlet:

- Ticket and batch numbers
- Internal code, supplier code...
- Separation by department (e.g. for parapharmaceuticals)
- ... and many other variables (or zones) customisable by user.

Composition of these data records can be made to mimic the format of client data.

# FONCTIONS DETAILLEES

Optional settings of **Thalia-Gescom** allow very advanced personalisation of data records and of all display screens. Each pharmacy outlet "sees" its own personal environment, although only one central software programme is installed.

## Counter sales

Most sales take place at the counter, accompanied by a purchase order if a company is the buyer. Direct tickets and proformas are allowable.

It is, of course, possible to call up all or part of

Référence	Désignation	Q	P.U. Vente	Rem	Tx	CP	Total	Typl	Item
AGN0003	Couverture écu ratures beiges	0	1,00	65,00	0,00	0	0	65,00	0 1
AGN0039	Débardeur blanc 142 cashmere	0	1,00	35,00	10,0	0	0	31,50	0 3
Remise commerciale et exceptionnelle		0	0,00	0,00	0,00	0	0	0,00	0

the client or product records relevant to the current transaction. The process is simple and user-friendly. Printout of the mini-invoice or cash register ticket is totally adaptable for each outlet.

## Discounting

C	Crit. tiers	C	Crit. article	P	Prix unit	Taux	C	Début	Fin	Seul Q	R	Sur
C					0,00	0,00		31/12/2078		0,00		

Partie Client

Partie Article

Conditions croisées Client/Article sur prix, taux, date de validité et seuil quantitatif

CodP1	CodP1	CodP1	CodP1	CodP1	CodP1	CodP1	CodP1	CodP1	CodP1	CodP1	CodP1	CodP1	CodP1	CodP1	CodP1	CodP1	CodP1	CodP1	CodP1	
0,0	0,0	0,0	0,0	0,0	0,0	0,0	0,0	0,0	0,0	0,0	0,0	0,0	0,0	0,0	0,0	0,0	0,0	0,0	0,0	Non
0,0	0,0	0,0	0,0	0,0	0,0	0,0	0,0	0,0	0,0	0,0	0,0	0,0	0,0	0,0	0,0	0,0	0,0	0,0	0,0	Non
0,0	0,0	0,0	0,0	0,0	0,0	0,0	0,0	0,0	0,0	0,0	0,0	0,0	0,0	0,0	0,0	0,0	0,0	0,0	0,0	Non
0,0	0,0	0,0	0,0	0,0	0,0	0,0	0,0	0,0	0,0	0,0	0,0	0,0	0,0	0,0	0,0	0,0	0,0	0,0	0,0	Non
0,0	0,0	0,0	0,0	0,0	0,0	0,0	0,0	0,0	0,0	0,0	0,0	0,0	0,0	0,0	0,0	0,0	0,0	0,0	0,0	Non

Remises croisées par grille

Discounting is calculated according to sale type, client type, product or item type, or client/item combos. Personal tariffs may also be implemented...

Thalia-Gescom can easily handle promotional tariffs/discounts.

## Stock management

Stocktaking is updated both in quantity and value each time an invoice is issued. Product records create sales stats in real time, instantly accessible. The same, of course, applies to client records.

Supply levels may be monitored by simply inspecting deliveries. The inventory function is built in.

Référence	Désignation	Quantité	Taille	Couleur	P.U. Achat	Rem	Tx	CP	Total
GDTSH006201	TSHIRT UNI 086	1,00	--	--	30,00	0,0	0	0	30,00
BF PT DROIT	BF PANT	1,00	--	--	50,00	0,0	0	0	50,00
		0,00	--	--	0,00	0,0	0	0	0,00

Saisie des appros avec historiques en direct et stats en temps réel

## Settlements

After issuing a ticket or mini-invoice, the software can look up and display the settlement status of the order (multi-currency). Banking transactions are simple, auxiliary account update is rapid.

Ancien solde	Montant facture	18256	CFA
DEBITEUR		0	EURO
16800,00	Net à payer	182,56	CFA
		0,00	EURO
Mode de règlement	Montant règlement	Devises	Imp. chèq. Libellé auxiliaire
Espèces	0	CFA	
Chèques Sur Place	0	CFA	
Carte Bleue	0	CFA	
Sur Compte	0	CFA	
Autres	0	CFA	
Trop perçu (Rembt espèces)	Nouveau solde		
0,00	DEBITEUR		
Reste à payer		19936,00	CFA
18256,00			



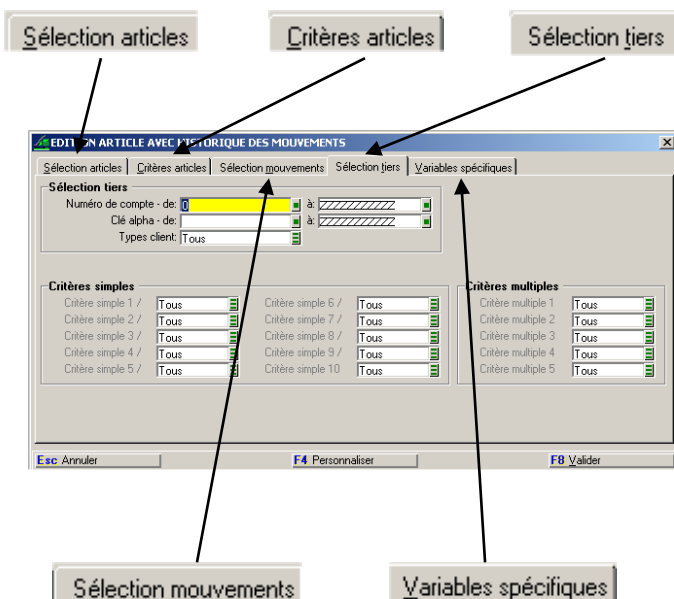
# FONCTIONS DETAILLEES

## DETAILED FUNCTIONS

### List of standard reports

Many standard reports are available:

- **Item List** including tariffs, quantities and other variables as needed
- **Client list**, mail addresses, envelope labels



- Data records in ASCII format for export to other software programmes, or direct interface with Excel™
- **Sales logs**. These are personalised and can include calculation of averages, margins, etc.
- List register, including day, time, salesperson and other important data.
- Sales by time slot or by product type.
- **Historical** by client; turnover for three years as a function of sales period.
- **Tracking of batch numbers** or packages.

### Special reports

As a service to a wide range of management needs, data processing offers:

- Breakdown by invoice settlement mode or other criteria.
- Fully customisable statistics built into the statement generator. Sales logs are unlimited and may include whatever factors are required for monthly analysis.

### Proformas and orders

**Thalia Gescom 7** comes with supplementary modules such as estimates/proformas and client orders.

Proformas are linked to orders, which in turn are linked to invoices or cash register tickets. There is no need for multiple data entry, and stocktaking is done automatically with every transaction.

### Client tracking

The client tracking module offers

- Display of most significant data
- Display of commercial data
- Display of client stock
- Client research, historical data
- Labelling, commercial operations

### Auxiliary accounting

An optional "lite" auxiliary accounting module keeps track of ticket chasing, invoices, cheque cashing and other settlements.

This module also allows :

- publication of General Ledger and balances,
- publication of bank deposits
- publication of scheduler
- interface with existing accounts
- display of correction
- lookup of part numbers, account settlement

# ACHATS FOURNISSEURS

## SUPPLIER PURCHASING

### Pre-ordering

The "pre-ordering" module assists stock management by stock rotation. It acts as a prompt for stock ordering decisions, and can complete the "Purchases" chain. It offers:

- A suggestion (or the manual creation) for a pre-order of a list of items, either all-suppliers or one named supplier,
- Automatic optimisation of the supplier list by multiple criteria (prices, delivery, etc.),
- Modification of a pre-order (quantity, addition or subtraction of product specification, addition or selection of a supplier, modification of purchase conditions, etc.)
- Output of pre-orders or price queries,
- Validation of as many supplier orders as there are suppliers listed.

These suggestions for pre-ordering are generated automatically, either from stock minimums (or low-stock alert levels, perhaps with a multiplier), taking account of outstanding orders. Factors influencing a pre-order are monthly usage statistics over a maximum of 12 months, delivery delays, security margin and ordering frequency.

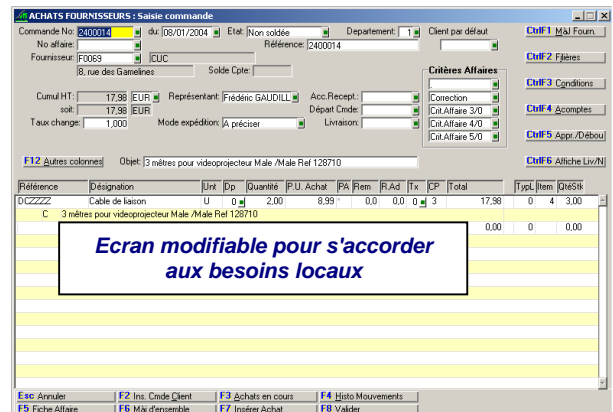
### Purchases

A supplier purchase is:

- **either** entered into the database by an operator, who may retrieve details from the client order
- **or** generated automatically by a pre-order.

The header may contain:

- the order number, the business number
- the supplier
- the status of the order (for global tracking)
- the purchase clerk, shipping method
- order date, shipping date, delivery date, date of receipt notification, of invoice...
- currency and exchange rate if applicable



The body may contain:

- the item code, designation
- free-form comments
- internal comments
- quantity ordered, quantity delivered (including packaging)
- unit price, supplier's discount, taxes
- requested delivery date line by line
- etc, etc.

### Supplies and stocks

**At physical delivery** of merchandise, it may:

- Be sent to stock for eventual delivery to the client
- Be delivered directly on agreed terms.

The system can generate supply data from supplier orders, and manage balances, all without re-keying. At the same time, it calculates an approach coefficient, either as a percentage or as a price equivalent.

Stocktaking is updated **automatically** and is evaluated. Supply slips or delivery slips are created, and at the same time **barcode labels** may be generated.

An intermediate **Transit** module can be inserted between the supplier order and the supply confirmation, for companies that need to manage import documentation.



# ACCESSOIRES DE SAISIE EN CAISSE

On the countertop, input and display equipment should be user-friendly, functional and discreet. Technically, there are two options. You have a choice of add-ons to your existing PC, or a special "Cash" integrated system. These days cash terminals are affordable, and enhance the sales experience.

## Integral POS terminal

POS terminals are essentially PCs with all the necessary peripherals for retail sales. The 12-inch screen reduces the countertop space required. Certain models are touch-screen capable.



## Digital cash register drawer

In this accessory, the cash register drawer is connected to the computer. Every billing validation (creation or modification) causes the drawer to open.

Manual operation of the drawer is effected securely using a key.

## Barcode reader

The modern classic barcode reader is a **handheld wand** with an interface to the PC. It reads the barcode directly and interprets both the item code, the price and the client code (assuming the client has a loyalty card).

An alternative is the **optical pencil**, which is more ergonomic.



For a more "sedentary" cashpoint, a **fixed scanner with pointable ray** is preferred. This type is particularly suited to large-scale operations.

For large-volume installations, particularly for inventories, another good option is a **pistol reader** which records data using its own internal memory. The data can then be read by a software system via an ASCII interface.

## Displayer

Another very compact option is the **displayer** which presents, in real time, quantity and price (line by line) on its little screen every time an item is scanned by the wand.

After final validation of the transaction facture, the total appears on the displayer screen.



## Screen

A POS terminal, sited on a countertop with limited space, must be user-friendly and discreet. Small 9-inch or 12-inch screens exist for that purpose.



## Payment terminal

Stand-alone or connected to the PC, it records credit or debit card payments.

## Printers

A 40-column **ticket printer** is standard with the installation. It can also be used for daily sales printouts.

The **cheque printer** will fill out the client's cheque after validation of the transaction.

# PARAMETRES & PROTECTIONS

Many customisation options are available for adapting the application to the requirements of a particular shop and the daily routines that are most important. Using these tabulated options and their ancillary functions, the working environment can be suited to your tasks.

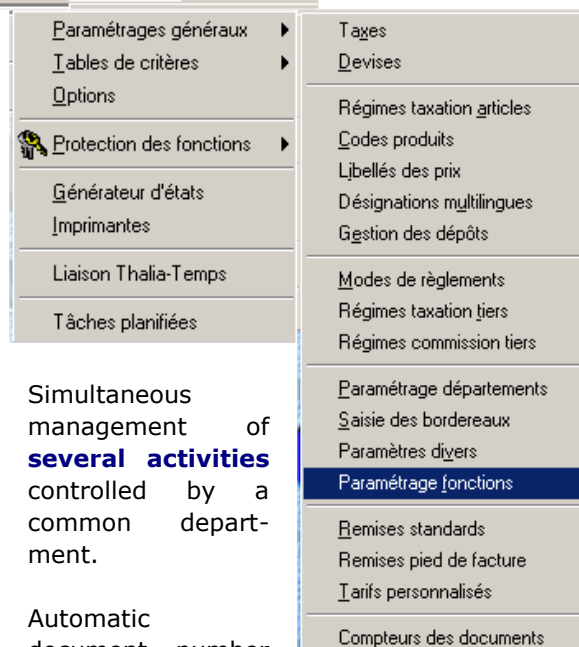
## Management of custom options

- 32 **VAT rates** are embedded, and multiple taxes may be cascaded. Total rounding is automatic. Invoices may be written either as "+VAT" or "Tax included".
- Management of **tax codes** as they apply to clients or products, cascading taxes, taxes on volume, weight...

Thalia 8.1 - THALIA

G C T Dossiers Stock Tiers Affaires Ventes Facturation Achats Fabrication Paramètres Utilitaires ?

- Management of **estimates** including exchange rates, using templates.
- Definition of product families, grouping several products of the same type to facilitate product accounting and **statistical** summaries.
- Customisation of **payment methods**, reflected in the sales ledger, also in foreign currency.
- Management of **storage locations** according to criteria defined in the product files.
- Definition of many **categorisation criteria** in the product files, the client/supplier files, and even in the invoices, facilitating all imaginable data sorting.
- **Personal tariffs** are accommodated – for example, promotions, "value" or "quantity" quotas, or retroactive discounts...
- Management of **depots** and **groups of depots** taking account of local taxation regulations.



- Simultaneous management of **several activities** controlled by a common department.
- Automatic document number **incrementation** by department.
- **Multilingual labelling** for the benefit of foreign clients.
- Oversight of sales and shipping slips and **control** of returns.

## Security

- Multi-user capability with control of **access** by password.
- Management of **group profiles** data input control in screens, menus and functions.
- Content of **data input screens** modified according to user or user group (access to data fields, field and text modification, personalised keystroke functions...).

# OUTILS TECHNIQUES THALIA

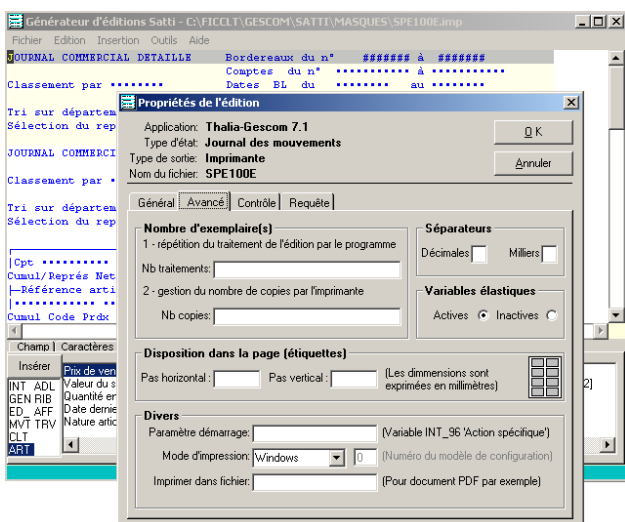
Customisation tools for data input screens and data displays are built in to [Thalia Gescom](#). Our "turnkey" service includes pre-configuration according to your needs, assuring a smooth and immediate start-up.

## Statement generator

All data accessed by the application is displayable in the form of completely customisable publications.

Users generally need rapid access to data summaries (sales, purchases or inventory). The format of these documents depends on their **purpose and on available templates**. **Information** may be formatted as .pdf or text, interchanged with collaborators, by e-mail, by fax or even with other applications (accounting packages, for example).

**Thalia Gescom** embodies a full-featured statement generator, equally capable in terms of content and style. Using the power of SQL statements, the utility of this tool is essentially unlimited.



Any kind of summary table may be assembled. Control panels and report generation can cover every business activity.

## Screen generator

All data entry and selection screens are customisable and may be modified without any programming. For example, you may :

- Modify the display of the client, supplier or product data records – eliminating unneeded data and adding your own data fields.
- For ease of data manipulation when creating publications, you can filter the selection criteria and save your own selection mask.

Display screens can also contain conditional fields, entry and display prohibition, calculation formulae, free-form fields (text, numerical, memo, date...).

Data may also be displayed differently according to user permissions.

## Interfaces

Tools for formatting data from whatever source are included as standard.

- Direct write to the database from a peripheral application is possible if an application requires it.
- Using ASCII formatting, any external data can be imported.

As for data export, formatting is 100% free, and interfacing with all existing management applications is possible, in particular accounting software (interface validated with Ciel, Sybel, Api, Côte Ouest, SAP, Sage 100, Sage 500).

## SQL explorer

An ancillary database search tool is a standard part of the application. The utility is reserved for administrators and has many useful features.

Finally, the data structure allows for the addition of free-form data tables in addition to those installed as standard.

**THALIA INFORMATIQUE**  
79, boulevard de la République  
92430 MARNES LA COQUETTE - FRANCE

Phone  
+33 1 47 10 91 00

Fax  
+33 1 47 41 99 37

E-mail  
[infos@thalia-france.com](mailto:infos@thalia-france.com)

Web  
[www.thalia-france.com](http://www.thalia-france.com)